



# Week at the Creek

December 1, 2025

Hawk families,

We would like to share our gratitude to all the Hawk families that donated to our Hickory Hearts Food Drive. We collected more than enough to help our families through the holiday season!

As we begin planning for our holiday celebrations, please take a moment to reflect on your volunteer status. Please remember that all visitors must sign up for School Access. Please complete, or update, an application at:

<https://www.stjohns.k12.fl.us/volunteer/>.

Please make sure that you continue to visit our website for the most up-to-date information regarding our school:

<https://www-hce.stjohns.k12.fl.us/>.

**Spirit Day EVERY Friday!**

Wear your HCE spirit wear



## December

12/11-12/12 Winter Concert  
12/17 Field Day: Reindeer Games 2025  
12/18 Field Day: Reindeer Games 2025  
12/19 Field Day: Reindeer Games 2025  
12/15-12/19 PTO Sponsored: Holiday Shoppe  
12/15-12-19 Holiday Spirit Week  
12/19 EARLY RELEASE  
12/22-12/31 NO SCHOOL: Winter Break

## January

1/1-1/2 NO SCHOOL: Winter Break/Teacher Planning  
1/5 Classes Resume  
1/15 Report Cards Issued  
1/19 NO SCHOOL: Martin Luther King Jr.  
1/26 Class Pictures

## Lunch Menu for Week of 12/1

Breakfast is \$1.75; Lunch \$3.25

### Monday

- Chicken Biscuit
- French Toast
- Papa Johns

### Tuesday

- Penne Pasta w/marinera
- Penne Pasta w/meatballs
- Pepperoni Calzone

### Wednesday

- Homestyle Chicken Sandwich
- Chicken Nuggets

### Thursday

- Cheese or Pepperoni Pizza
- Hot Dog

### Friday

- Hamburger
- Cheeseburger
- Max Cheese Sticks



To purchase a la cart items, your student **MUST** have a positive lunch account.

## HCE Lunch Visits

### December Sign Ups

Please note that there are NO photos or videotaping allowed in our cafeteria. Some students are on a do not photograph list. Please honor this request.

Please follow the directions on the HCE Lunch Visit sign up on the link above. Younger siblings should not attend.

Please know that to participate you **MUST** be a cleared volunteer. If you have not had a chance to fill out our access form, please do so now at:

<https://www.stjohns.k12.fl.us/volunteer/> .

We look forward to your visit.



HICKORY CREEK ELEMENTARY

# HOLIDAY SHOP

COMING DECEMBER 15-19

Cash and Elf wallet will be accepted. More  
Details to come!

The Holiday Shop is a fun and safe way for  
students to experience the joy of giving. They'll  
be able to shop for affordable gifts for the  
special people in their lives — all by themselves!

SIGN UP TO VOLUNTEER

[www.hcepto.org/parents](http://www.hcepto.org/parents)

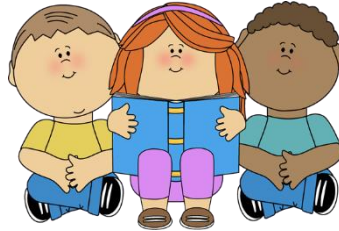
# MEDIA CENTER CORNER

To access our SSYRA Books and Information 25-26: [SSYRA](#)

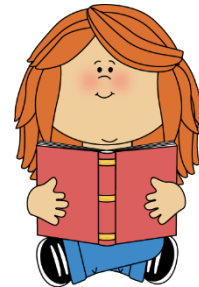
Search library  
catalog here:



View Instructional  
Materials here:



Access Parental  
Choice Library  
Book Restriction  
Form\*\* here:



*\*\*Parents may utilize this form to restrict titles their child may check out in the school library.*



## DISMISSAL CHANGES

**DISMISSAL CHANGES** are accepted until 2:00 p.m.  
(M, T, TH, F) and 1:00 p.m. (W).

**EARLY CHECK-OUTS** (for any reason) must be completed  
by 2:10 (M, T, TH, F) and 1:10 p.m. (W).

Your respect for our dismissal policy helps maintain safety and security as we complete attendance/check-out reports accurately before students prepare for and move to their dismissal stations. It is often very difficult to locate students or get them ready to leave early during the last minutes prior to dismissal bell. Teachers and students are completing lessons, packing up, or on the move to dismissal stations.

Please use the [Dismissal Change Form](#) found on the HCE website.

**Please note**, in order to sign-in to our lobby computer as a volunteer, you **MUST** be a cleared volunteer and you **MUST** have a driver's license. Please follow the directions posted on the iPads to sign in.

Please visit our site regarding school access:  
<https://www.stjohns.k12.fl.us/volunteer/>



## Home Access Center

The Home Access Center (HAC) is a web-based application that is part of our Student Information System called eSchoolPlus.

Please visit the website below to access or sign up for an account:

<https://www.stjohns.k12.fl.us/hac/>.



This system provides parents and students with a daily summary page, schedule and attendance, discipline information, class work, test scores and course requests for all students in grades 3-5. This is also where families can access their student's interim report and report card. If you need assistance with your account, please contact our Computer Operator, Lizeth Antonetti.

## Absences

A **written note** is needed within 48 hours of returning to school stating the cause of the absence.

**Excused absences include:** personal illness, illness of an immediate family member, a death in the family, religious holidays of the student's established religious faith, required court or law agency appearances, public functions, state competitions, scheduled doctor or dentist appointments.

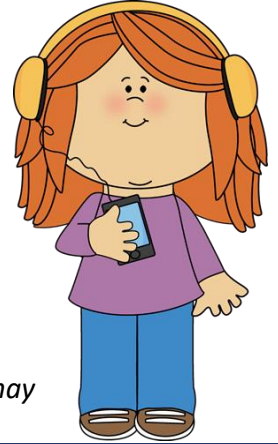
**Unexcused absences include:** shopping trips, pleasure trips, suspension from school, appointments without prior approval except in case of emergency, truancy, and other avoidable absences.

For a complete list of excused and unexcused absences, refer to the [Student Code of Conduct](#).

# Cell Phones and Other Wireless Devices\*

Pages 25-26 of the [Student Code of Conduct](#) state-

Students are permitted to possess cellular phones and other wireless communication devices on school grounds, school buses, and at school-sponsored events. However, all devices must remain powered off and securely stored in a student's backpack, purse, locker, or vehicle during the school day. In accordance with House Bill 1105, the use of wireless communication devices by elementary and middle school students is strictly prohibited during the school day. *Failure to comply with these guidelines may result in the confiscation of the device. Repeated violations will be treated as defiance of school rules and may lead to disciplinary consequences.*



*\*Wireless devices include smart watches. All smart watches should be on Airplane Mode. Texting, making, or receiving calls, and/or recordings are not allowed. Failure to comply may result in the device being confiscated.*