



Week at the Creek

November 17, 2025

Hawk families,

Last week we celebrated our military families! Thank you to all that joined us on Wednesday. We are very grateful for your service.

This week our Monster is back, but this time he is hungry for **PANTRY DONATIONS!** Please see page 2 for more information.

As we head into Thanksgiving Break, we want to share how thankful we are that we serve such a wonderful community! Because of our families, our students are ready to learn every day. We are very blessed to have an amazing group of adults that love what they do...serve students!

Please make sure that you continue to visit our website for the most up-to-date information regarding our school:
<https://www-hce.stjohns.k12.fl.us/>.

Spirit Day EVERY Friday!

Wear your HCE spirit wear



November

11/17 Fifth Grade Spelling Bee
11/18 PTO Monthly Meeting @ 3:30PM
11/19 PTO Sponsored: Donuts w/Grownups 2nd-3rd @ 7:30AM
11/21 PTO Sponsored: Nothing Bundt Cakes for Staff
11/21 Character Counts Celebration: Citizenship @ 9AM
11/24-28 NO SCHOOL: Thanksgiving Break

December

TBD Winter Concert
12/17-19 Field Day: Reindeer Games 2025
12/15-12/19 PTO Sponsored: Holiday Shoppe
12/15-12-19 Holiday Spirit Week
12/19 EARLY RELEASE
12/22-12/31 NO SCHOOL: Winter Break

January

1/1-1/2 NO SCHOOL: Winter Break/Teacher Planning
1/5 Classes Resume
1/15 Report Cards Issued

Lunch Menu for Week of 11/17

Breakfast is \$1.75; Lunch \$3.25

Monday

- Chicken Biscuit
- French Toast
- Papa Johns

Tuesday

- Penne Pasta w/marinera
- Penne Pasta w/meatballs
- Pepperoni Calzone

Wednesday

- Homestyle Chicken Sandwich
- Chicken Nuggets

Thursday

- Cheese or Pepperoni Pizza
- Hot Dog

Friday

- Hamburger
- Cheeseburger
- Max Cheese Sticks



To purchase a la cart items, your student **MUST** have a positive lunch account.

HCE Lunch Visits

November Sign Ups

Please note that there are NO photos or videotaping allowed in our cafeteria. Some students are on a do not photograph list. Please honor this request.

Please follow the directions on the HCE Lunch Visit sign up on the link above. Younger siblings should not attend.

Please know that to participate you **MUST** be a cleared volunteer. If you have not had a chance to fill out our access form, please do so now at:

<https://www.stjohns.k12.fl.us/volunteer/> .

We look forward to your visit.

HICKORY'S HEART HOLIDAY FOOD DRIVE

NOVEMBER 17-21



The Candy Monster will be back to collect donations. Please help us fill him with holiday spirit. The grade that collects the most items will be rewarded with a popsicle dance party in December.

ITEMS BEING COLLECTED

- Gift cards (each dollar counts as 1 item)
- Mac n cheese
- Fruit cups/pouches
- Oatmeal
- Canned vegetables
- Canned soup
- Spaghetti-Os
- Meat sticks
- Granola bars
- Canned tuna/canned chicken

MEDIA CENTER CORNER

To access our SSYRA Books and Information 25-26: [SSYRA](#)

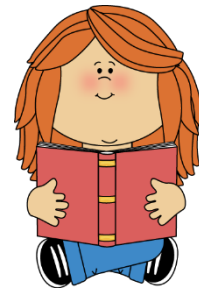
Search library
catalog here:



View Instructional
Materials here:



Access Parental
Choice Library
Book Restriction
Form** here:



***Parents may utilize this form to restrict titles their child may check out in the school library.*



DISMISSAL CHANGES

DISMISSAL CHANGES are accepted until 2:00 p.m.
(M, T, TH, F) and 1:00 p.m. (W).

EARLY CHECK-OUTS (for any reason) must be completed
by 2:10 (M, T, TH, F) and 1:10 p.m. (W).

Your respect for our dismissal policy helps maintain safety and security as we complete attendance/check-out reports accurately before students prepare for and move to their dismissal stations. It is often very difficult to locate students or get them ready to leave early during the last minutes prior to dismissal bell. Teachers and students are completing lessons, packing up, or on the move to dismissal stations.

Please use the [Dismissal Change Form](#) found on the HCE website.

Please note, in order to sign-in to our lobby computer as a volunteer, you **MUST** be a cleared volunteer and you **MUST** have a driver's license. Please follow the directions posted on the IPads to sign in.

Please visit our site regarding school access:
<https://www.stjohns.k12.fl.us/volunteer/>



Home Access Center

The Home Access Center (HAC) is a web-based application that is part of our Student Information System called eSchoolPlus.

Please visit the website below to access or sign up for an account:

<https://www.stjohns.k12.fl.us/hac/>.



This system provides parents and students with a daily summary page, schedule and attendance, discipline information, class work, test scores and course requests for all students in grades 3-5. This is also where families can access their student's interim report and report card. If you need assistance with your account, please contact our Computer Operator, Lizeth Antonetti.

Absences

A **written note** is needed within 48 hours of returning to school stating the cause of the absence.

Excused absences include: personal illness, illness of an immediate family member, a death in the family, religious holidays of the student's established religious faith, required court or law agency appearances, public functions, state competitions, scheduled doctor or dentist appointments.

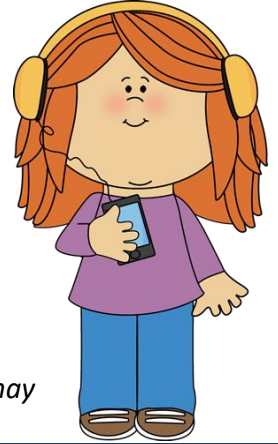
Unexcused absences include: shopping trips, pleasure trips, suspension from school, appointments without prior approval except in case of emergency, truancy, and other avoidable absences.

For a complete list of excused and unexcused absences, refer to the [Student Code of Conduct](#).

Cell Phones and Other Wireless Devices*

Pages 25-26 of the [Student Code of Conduct](#) state-

Students are permitted to possess cellular phones and other wireless communication devices on school grounds, school buses, and at school-sponsored events. However, all devices must remain powered off and securely stored in a student's backpack, purse, locker, or vehicle during the school day. In accordance with House Bill 1105, the use of wireless communication devices by elementary and middle school students is strictly prohibited during the school day. *Failure to comply with these guidelines may result in the confiscation of the device. Repeated violations will be treated as defiance of school rules and may lead to disciplinary consequences.*



**Wireless devices include smart watches. All smart watches should be on Airplane Mode. Texting, making, or receiving calls, and/or recordings are not allowed. Failure to comply may result in the device being confiscated.*