



# Week at the Creek

February 24, 2025

Hawks,

This week our third graders hosted their annual **Flea Market**. This is a culminating activity at the end of the third-grade economics unit. Students develop a product, set a cost/sale point, advertise their product, and monitor their profits. Our students are so creative, and their business skills are very competitive.



We have started planning for Spring Testing. Please check our website for testing calendars. We encourage all students to be present for the entirety of their testing. Before scheduling appointments in the months of April and May, please check our testing calendars. All calendars will be updated by next week.

Spirit Day EVERY Friday!

Wear your HCE spirit wear



## February

2/28 PTO Sponsored: Parent/Son Skate Night

## March

3/1 Open Enrollment for 25-26 School Year

3/4 SAC Monthly Meeting @ 4:00PM

3/11 PTO Monthly Meeting @ 3:30PM

3/11 Night of the Arts @ 6PM

3/12 Field Day Kinder-2<sup>nd</sup>

3/13 Field Day 3<sup>rd</sup>-5<sup>th</sup>

3/14 NO SCHOOL: Teacher Planning Day

3/17-3/21 NO SCHOOL: Spring Break

3/27 Report Cards Issued

3/27 Spring Portraits

3/28 Needs Assessment Survey Closes

## Lunch Menu for Week of 2/24

Breakfast is \$1.75; Lunch \$3.25

### Monday

- Chicken Biscuit
- French Toast Sticks
- Pappa Johns

### Tuesday

- Pasta w/Marinera
- Pasta w/meatballs

### Wednesday

- Chicken Sandwich
- BBQ Turkey
- Pepperoni Calzone

### Thursday

- Cheese OR Pepperoni Pizza
- Mini Corn Dogs

### Friday

- Hamburger
- Cheeseburger
- Max Cheese Sticks



*\*PLEASE NOTE THAT STUDENTS MUST HAVE MONEY IN THEIR ACCOUNT TO PURCHASE PAPPA JOHNS. Please check your student's balance weekly.*

## HCE Lunch Visits

### February Lunch Visits

*Please note that there are NO photos or videotaping allowed in our cafeteria. Some students are on a do not photograph list. Please honor this request.*

Please know that to participate you MUST be a cleared volunteer. If you have not had a chance to fill out our access form, please do so now at:

<https://www.stjohns.k12.fl.us/volunteer> .

Please follow the directions on the sign up. We look forward to your visit.

# HCE Needs Assessment Survey

Please use the link below to complete the Hickory Creek Needs Assessment Survey presented by our School Advisory Council (SAC). Your feedback is anonymous and valued deeply by the school. The survey will only take 5-10 minutes of your time, and we ask that you answer all questions. **Only one survey completion per household is needed.** The Survey will remain open until the end of the day, on March 28<sup>th</sup>. For every 100 surveys completed, the entire school will earn a reward:

- ✓ 100 surveys---*Pajama Day!*
- ✓ 200 surveys---*Dress Like a Staff Member Day!*
- 300 surveys---*Decade Day*—dress like your favorite decade..50's, 60's, 70's etc.

And if we make it beyond these levels, stay tuned for more fun!

Thank you for making Hickory Creek an even better place! Let your voice be heard!  
We listen and grow from constructive feedback;  
we also enjoy hearing positive feedback too! 😊

Questions? You can email, Laura Eads, SAC Chair and 2<sup>nd</sup> Grade Teacher at [Laura.Eads@stjohns.k12.fl.us](mailto:Laura.Eads@stjohns.k12.fl.us).

[Needs Assessment Survey Link](#)

## Night of the Arts

Please join us on Tuesday, March 11<sup>th</sup> at 6:00PM. The night will begin with an *art walk* through our halls. Our halls will be bursting with student art work! At this time you can also visit our *Book Fair* in the Media Center! Our *chorus* and *PERCUSSION* will perform beginning at 6:45PM. Our *Book Fair* will remain open from 6PM-7:45PM. We look forward to showing our community what our students have been working on!



Scholastic

# Book Fair!

March 7th - March 13th

Scan for important information and to create your e-wallet!



[www.scholastic.com/bf/hickorycreekelemschool](http://www.scholastic.com/bf/hickorycreekelemschool)

**Family Shopping @ Night of the Arts : March 11**

**Class Shopping Schedule:**





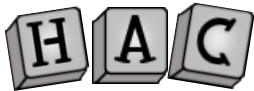
# DISMISSAL CHANGES

**DISMISSAL CHANGES** are accepted until 2:00 p.m. (M, T, TH, F) and 1:00 p.m. (W).

**EARLY CHECK-OUTS** (for any reason) must be completed by 2:10 (M, T, TH, F) and 1:10 p.m. (W).

Your respect for our dismissal policy helps maintain safety and security as we complete attendance/check-out reports accurately before students prepare for and move to their dismissal stations. It is often very difficult to locate students or get them ready to leave early during the last minutes prior to dismissal bell. Teachers and students are completing lessons, packing up, or on the move to dismissal stations.

Please use the [Dismissal Change Form](#) found on the HCE website.



## Home Access Center



The Home Access Center (HAC) is a web-based application that is part of our Student Information System called eSchoolPlus.

Please visit the website below to access or sign up for an account: <https://www.stjohns.k12.fl.us/hac/>.

This system provides parents and students with a daily summary page, schedule and attendance, discipline information, class work, test scores and course requests for all students in grades 3-5. This is also where families can access their student's interim report and report card. If you need assistance with your account, please contact our Computer Operator, Lizeth Antonetti.

## Absences

A [written note](#) is needed within 48 hours of returning to school stating the cause of the absence.

**Excused absences include:** personal illness, illness of an immediate family member, a death in the family, religious holidays of the student's established religious faith, required court or law agency appearances, public functions, state competitions, scheduled doctor or dentist appointments.

**Unexcused absences include:** shopping trips, pleasure trips, suspension from school, appointments without prior approval except in case of emergency, truancy, and other avoidable absences. For a complete list of excused and unexcused absences, refer to the [Student Code of Conduct](#).



# FIFTH GRADE

*Donuts with Grown-ups*

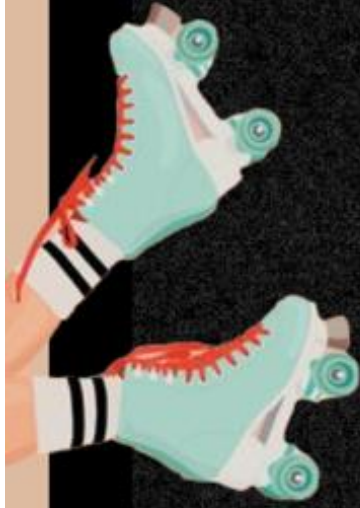


**APRIL 2ND | 7:30AM - 8:25AM**  
**HCE CAFETERIA**

Register by 3/26 at: [bit.ly/DonutsFifthGrade](https://bit.ly/DonutsFifthGrade)



# PARENT SON



## Skate Night

**FRIDAY, FEBRUARY 28TH  
4PM - 7PM**

SKATE STATION MANDARIN  
3461 KORI RD., JACKSONVILLE, FL 32257

TICKETS AVAILABLE AT  
**HCEPTO.ORG/SKATE**

DEADLINE 2/21

**\$10 PER  
PERSON**

INCLUDES SKATE RENTAL,  
SLICE OF PIZZA & DRINK

Adult must accompany student.



# MEDIA CENTER CORNER

To access our SSYRA Books and Information 24-25: [SSYRA](#)

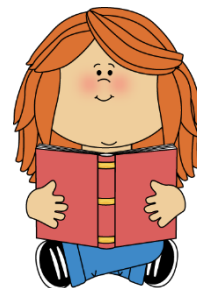
Search library catalog here:



Submit a purchase recommendation here:



Access Parental Choice Library Book Restriction Form\*\* here:



*\*\*Parents may utilize this form to restrict titles their child may check out in the school library.*

## Cell Phones and Other Wireless Devices\*

Page 26 on [the Student Code of Conduct](#) states:

*Students may possess cellular telephones and other wireless communication devices at school, on buses, and at school functions. However, **they must be turned off**, stored in student's backpack, purse, locker or vehicle. **The device shall not be used during the school day without administrative approval or on school buses to and from school.** Upon administrative approval, use is limited between classes and during lunch only. Students may not use a wireless communication device during instructional time, except when expressly directed by a teacher solely for educational purposes. Failure to comply may result in the device being confiscated. Repeated failure to comply will be considered defiance of school rules.*



*\*Wireless devices include smart watches. All smart watches should be on Airplane Mode while on campus. Texting, making, or receiving calls, and/or recordings on a smart watch are not allowed. Failure to comply may result in the device being confiscated.*

## SCHOOL ACCESS

Please note, in order to sign-in to our lobby computer as a volunteer, you **MUST** be a cleared volunteer and you **MUST** have a driver's license. Please follow the directions posted on the computer to sign in.

Ruth, our receptionist, can also help.

Please visit our site regarding school access:

<https://www-hce.stjohns.k12.fl.us/>

